

Sloane Whitfield  
Portfolio

3214 N Figueroa St 90065 Los Angeles  
United States  
sloane@sloanewhitfield.com  
sloanewhitfield.com  
+1 323 555 0147

I make paintings about the rooms we carry inside us — spaces that no longer exist except as feeling. My process begins with architectural fragments: doorframes, thresholds, corners of ceilings glimpsed at night. These become the scaffolding for paintings that are less about place than about the emotional residue a place leaves behind.

I work primarily in oil and encaustic on wood panel. The encaustic allows me to bury and reveal — to build a surface that has geological time compressed into it, where earlier decisions remain visible beneath the present one. I am interested in the painting as a kind of archaeological site, where excavation and accumulation happen simultaneously.

Lately I have been drawn to scale as a psychological tool. A small panel hung low forces the viewer into an intimate, almost crouching posture. A large canvas at the edge of peripheral vision creates unease. I think about how much of our emotional life happens at the threshold of attention — almost seen, almost remembered.

My work asks: what does it mean to feel at home in a space that exists only in paint?

Sloane Whitfield is a painter and installation artist based in Los Angeles, CA. Her work explores the tension between domestic architecture and emotional memory, using layered oil and encaustic on panel to construct spaces that feel simultaneously familiar and estranged.

Whitfield received her MFA from the Yale School of Art in 2017 and her BFA from the Rhode Island School of Design in 2014. She has exhibited widely across the United States and Europe, with solo presentations at Ratio 3 (San Francisco), Document (Chicago), and Galerie Nordine Zidoun (Luxembourg). Her work is held in the collections of the Los Angeles County Museum of Art and the Hammer Museum.

She has been awarded residencies at Skowhegan School of Painting and Sculpture, the MacDowell Colony, and the Headlands Center for the Arts. Whitfield's work has been reviewed in Artforum, Frieze, and the Los Angeles Times.

## **SLOANE WHITFIELD**

b. 1987 — Portland, United States

Lives and works in Los Angeles, United States

### **Education**

- 2017 MFA, Painting, Yale School of Art, New Haven, CT  
2014 BFA, Painting, Rhode Island School of Design, Providence, RI

### **Selected solo exhibitions**

- 2024 *Threshold Studies, Ratio 3*, San Francisco, CA  
2023 *Interior with No Doors*, Document, Chicago, IL  
2022 *Soft Architecture*, Galerie Nordine Zidoun, Luxembourg  
2021 *The Room Remembers*, Night Gallery, Los Angeles, CA  
2019 *Enclosures*, Martos Gallery, New York, NY

### **Selected group exhibitions**

- 2024 *New Acquisitions*, Hammer Museum, Los Angeles, CA  
2023 *Domestic Fictions*, ICA Philadelphia, Philadelphia, PA  
2023 *Painting Now*, Kunsthalle Basel, Basel, Switzerland  
2021 *Made in LA*, Los Angeles County Museum of Art, Los Angeles, CA  
2020 *Surface Tension*, The Drawing Center, New York, NY

### **Selected collections**

Los Angeles County Museum of Art (LACMA)  
Hammer Museum, Los Angeles  
Private Collections, New York

### **Grants & awards**

- 2022 Joan Mitchell Foundation Grant  
2021 California Arts Council Individual Artist Fellowship  
2016 - 2017 Yale School of Art Teaching Fellowship

### **Residencies**

- 2021 Headlands Center for the Arts, Sausalito, CA  
2019 MacDowell Colony, Peterborough, NH  
2018 Skowhegan School of Painting and Sculpture

### **Selected press**

Artforum, Frieze, Los Angeles Times, Mousse Magazine

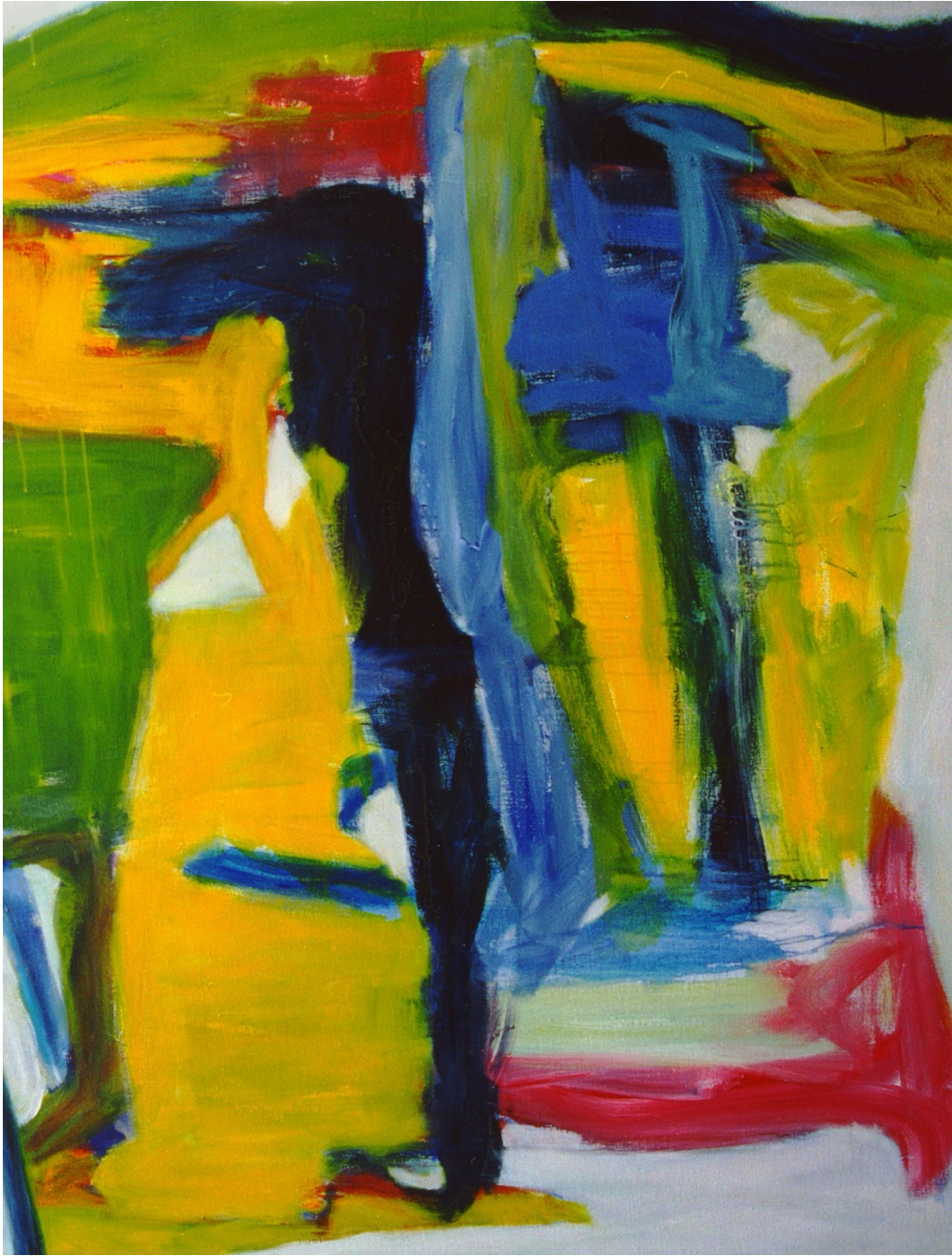


**The Room at 3am**

Oil and encaustic on panel

30 x 24 in

2024

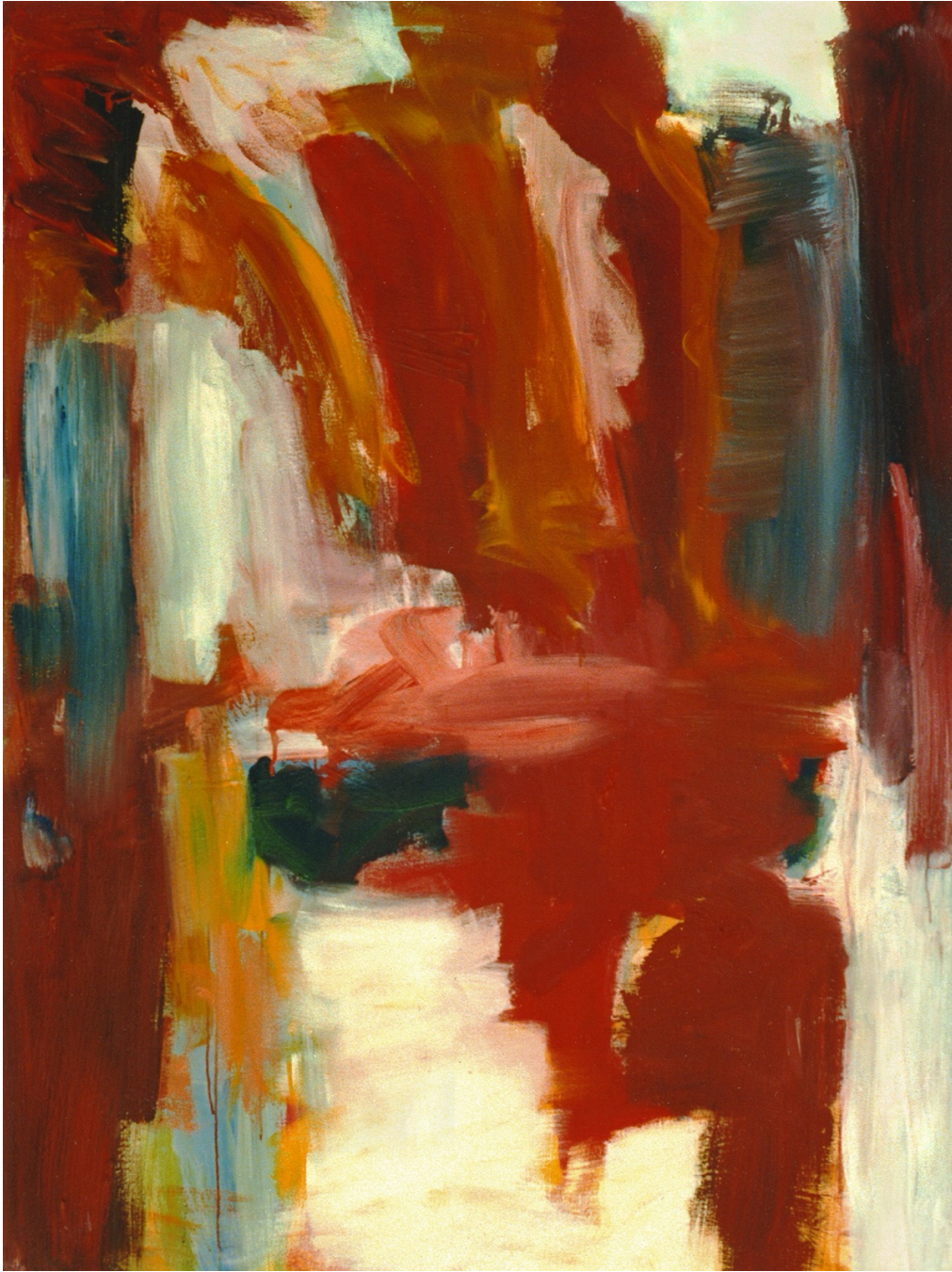


**Threshold (Yellow)**

Oil on panel

30 x 24 in

2024

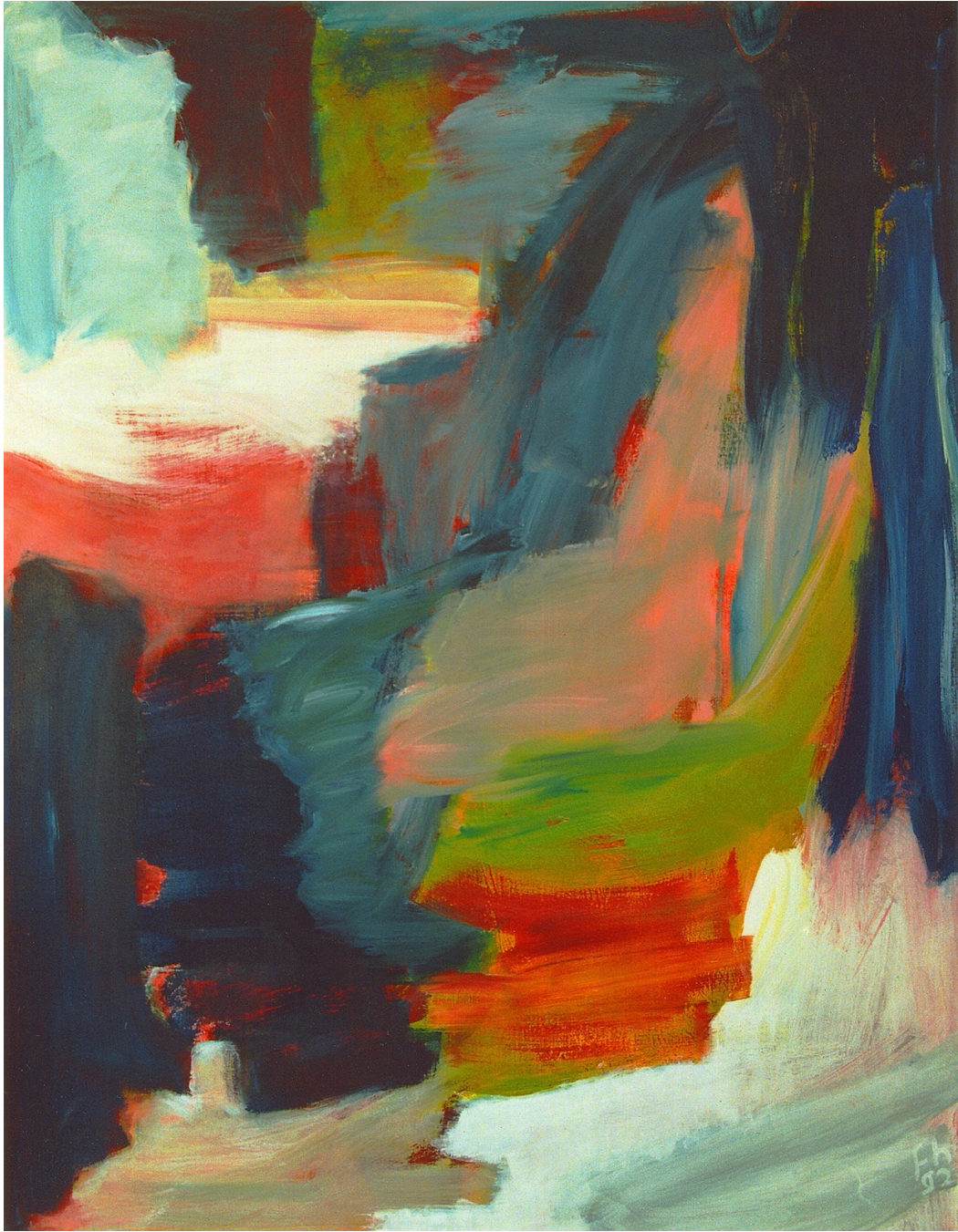


**Interior with Closed Door**

Oil and encaustic on panel

30 x 24 in

2023

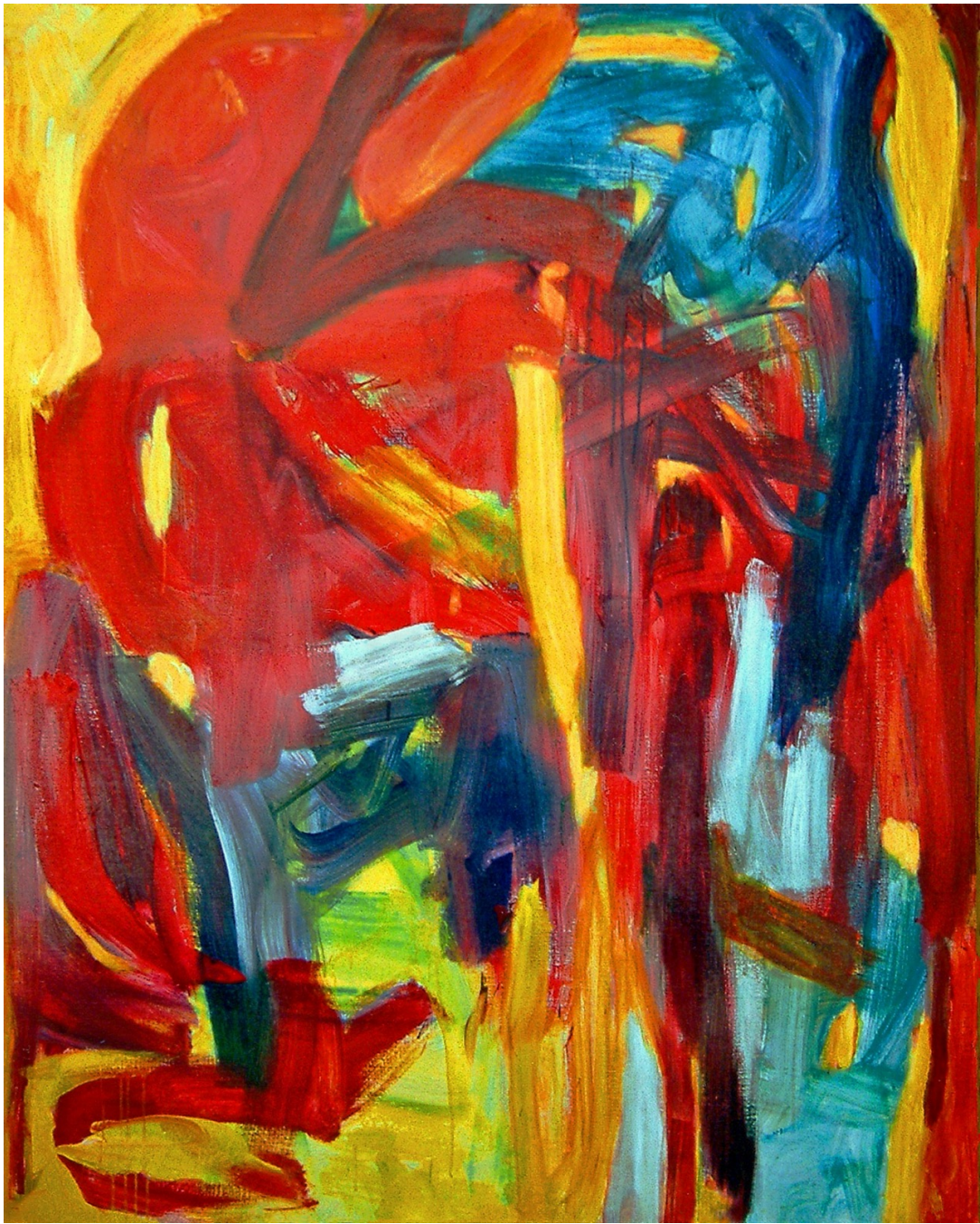


**Corner Study No. 7**

Oil on linen

30 x 24 in

2023

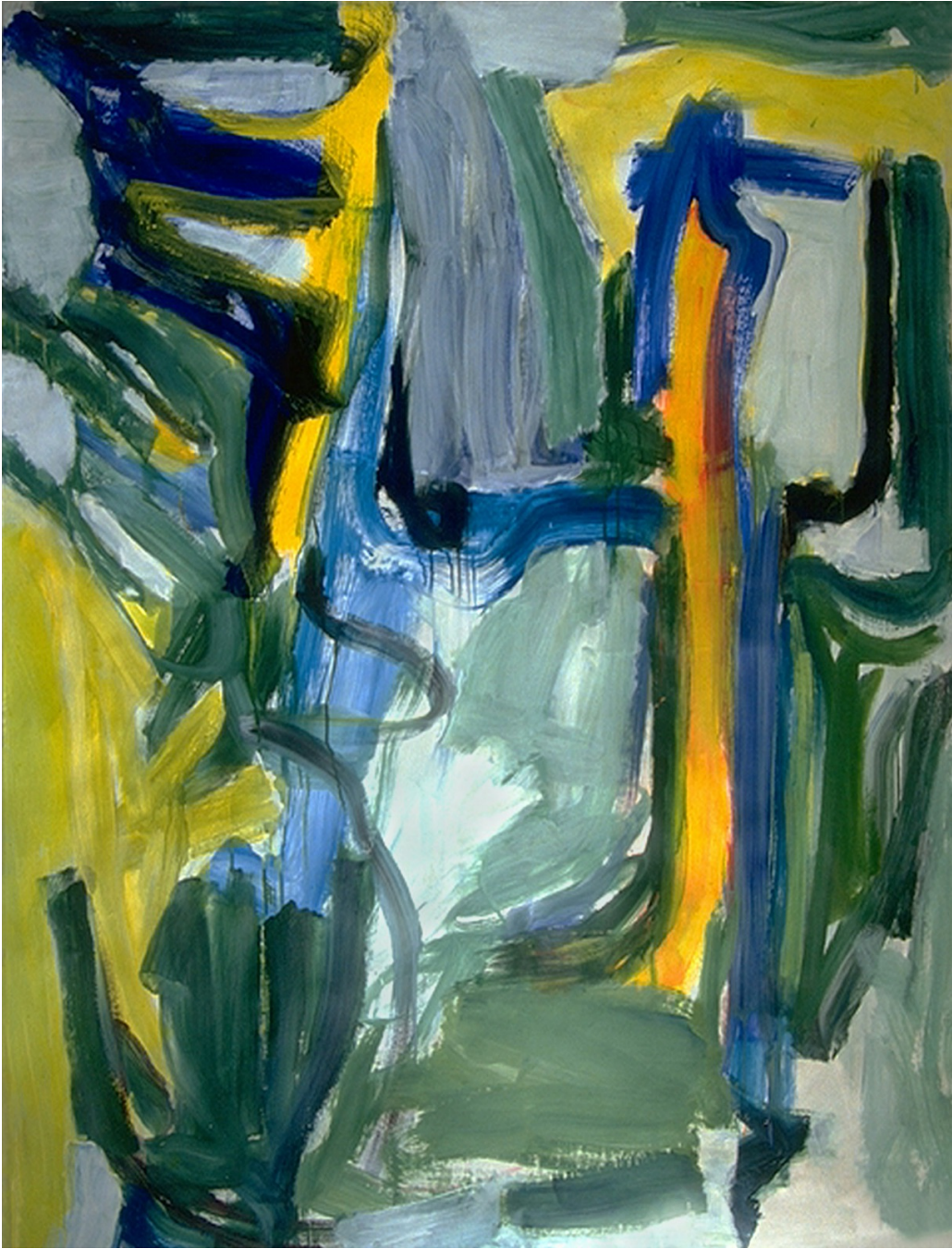


**Soft Partition**

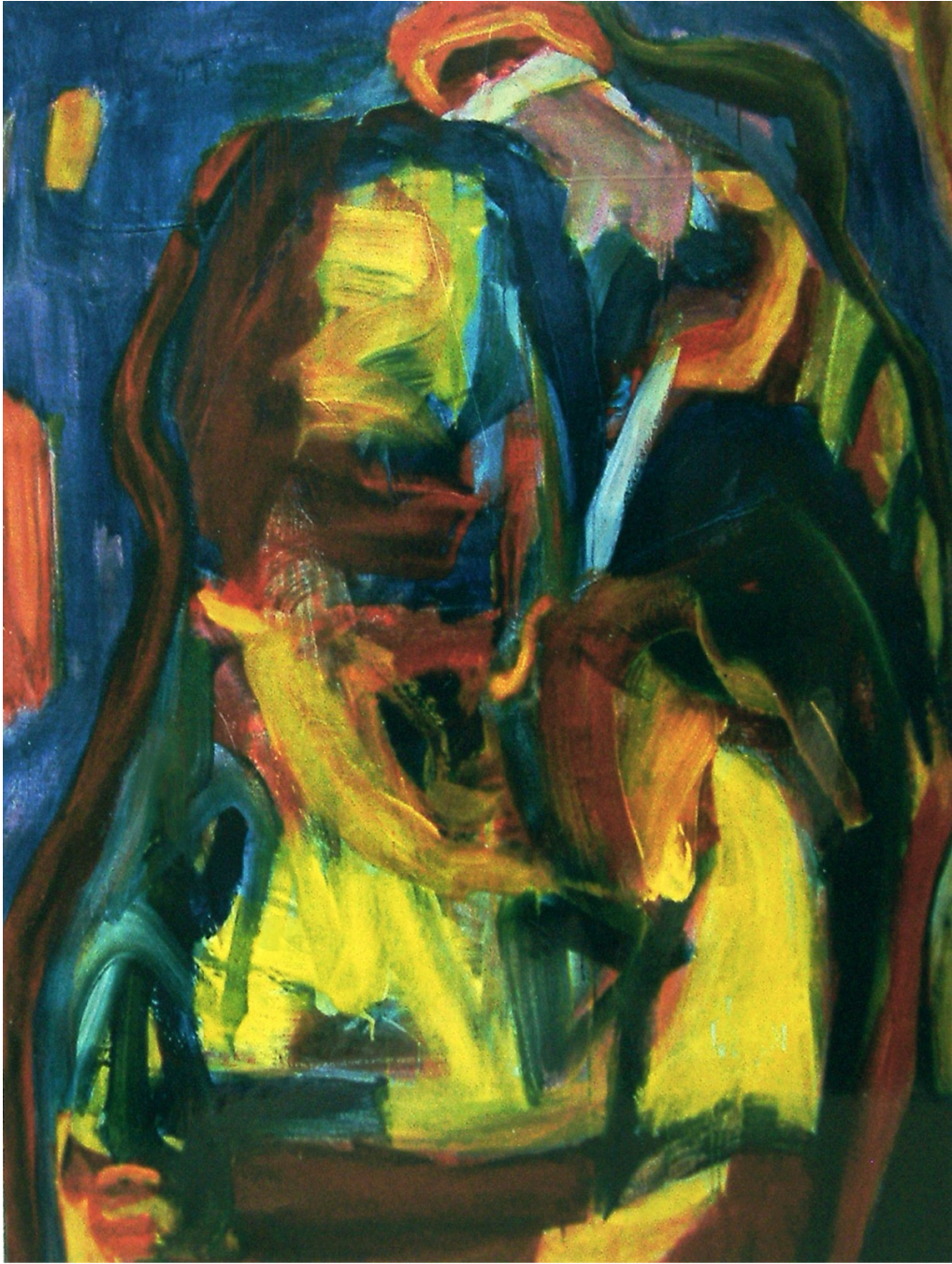
Encaustic on panel

30 x 24 in

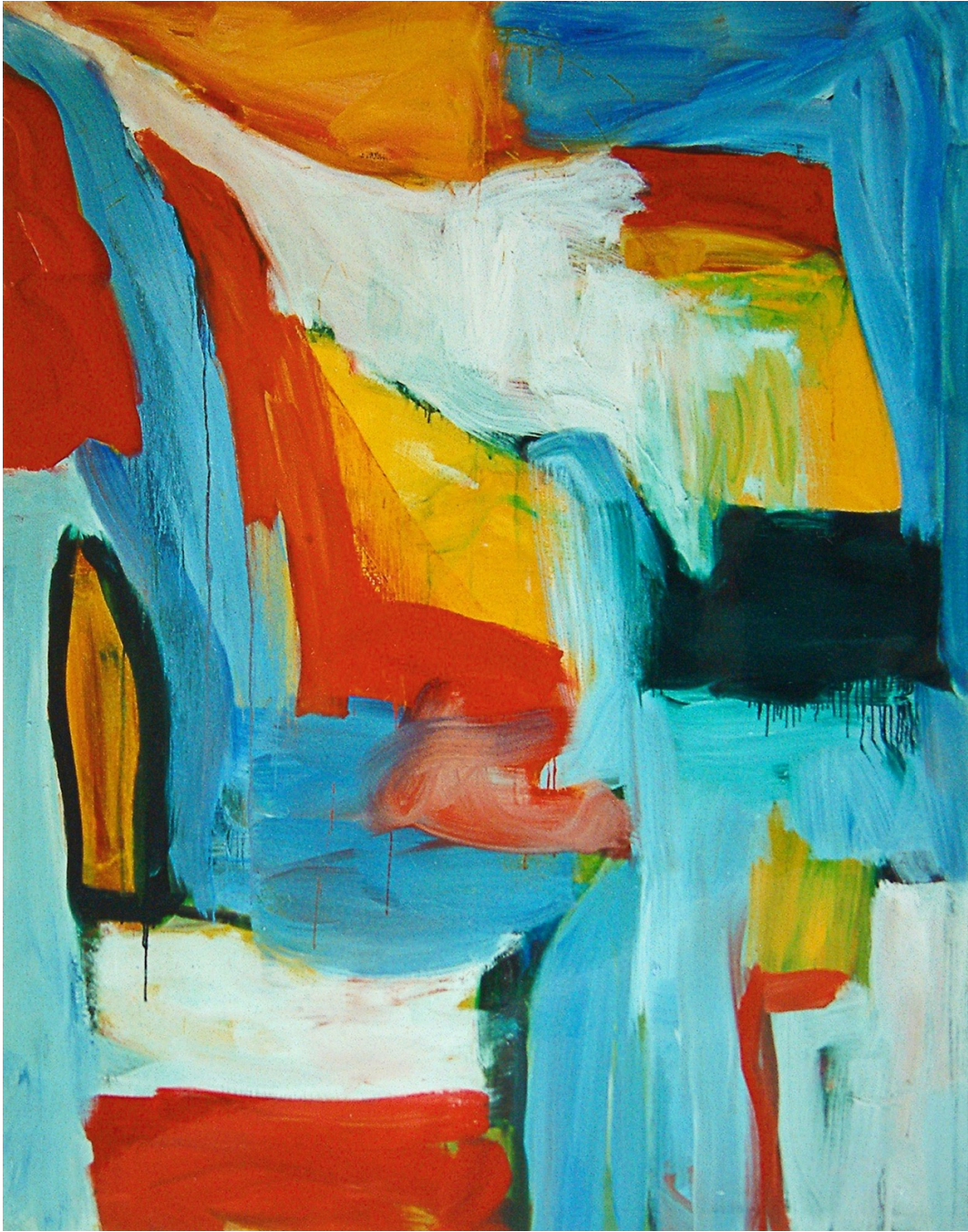
2022



**The Hallway Remembers**  
Oil and encaustic on panel  
30 x 24 in  
2022



**Ceiling Fragment**  
Encaustic on panel  
30 x 24 in  
2021

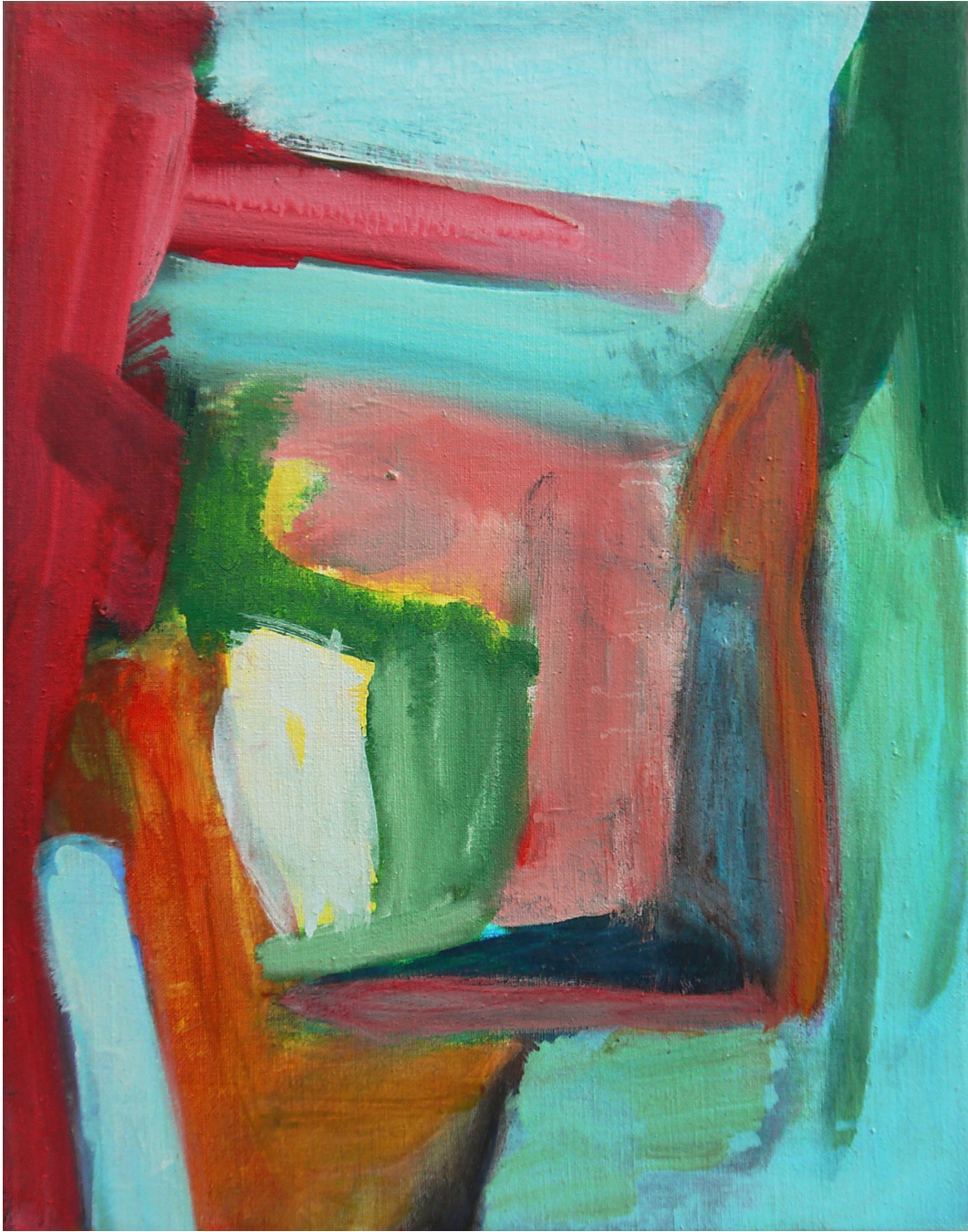


**Domestic Archaeology I**

Oil on panel

30 x 24 in

2022

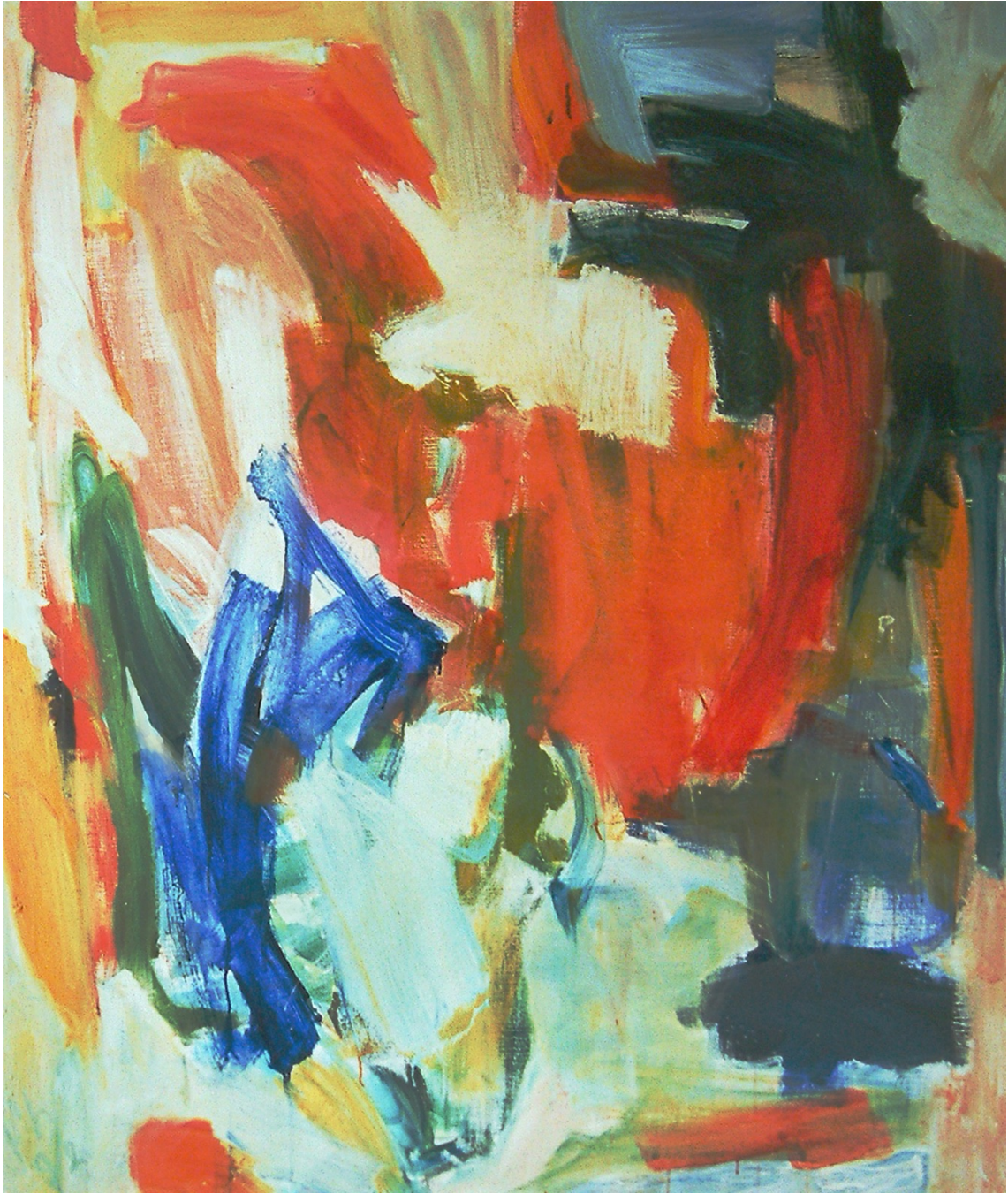


**Domestic Archaeology II**

Oil on panel

30 x 24 in

2022



**Room Without Windows**

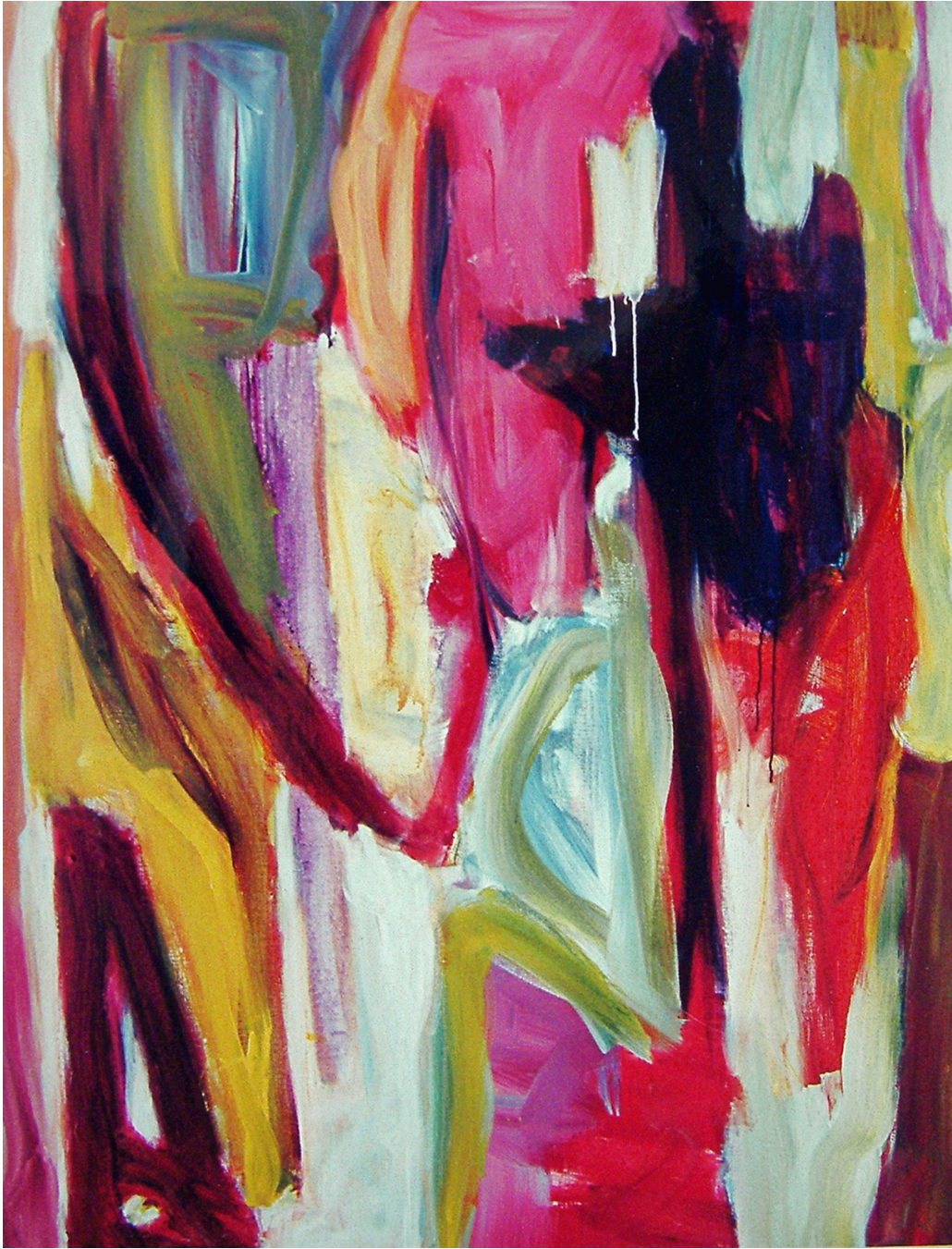
Oil on linen

30 x 24 in

2020



**Threshold (Blue, Night)**  
Oil and encaustic on panel  
30 x 24 in  
2021

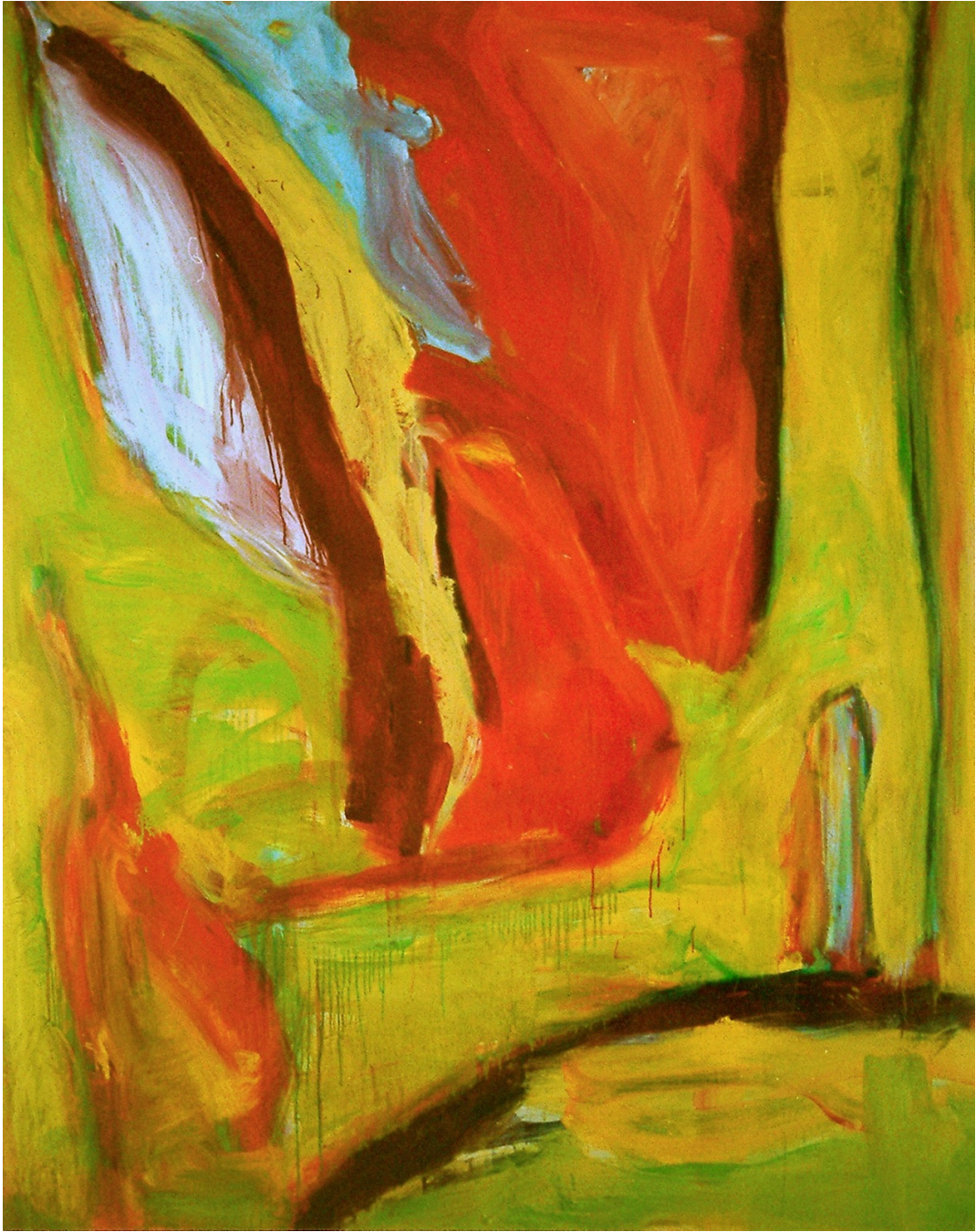


**Enclosure Study**

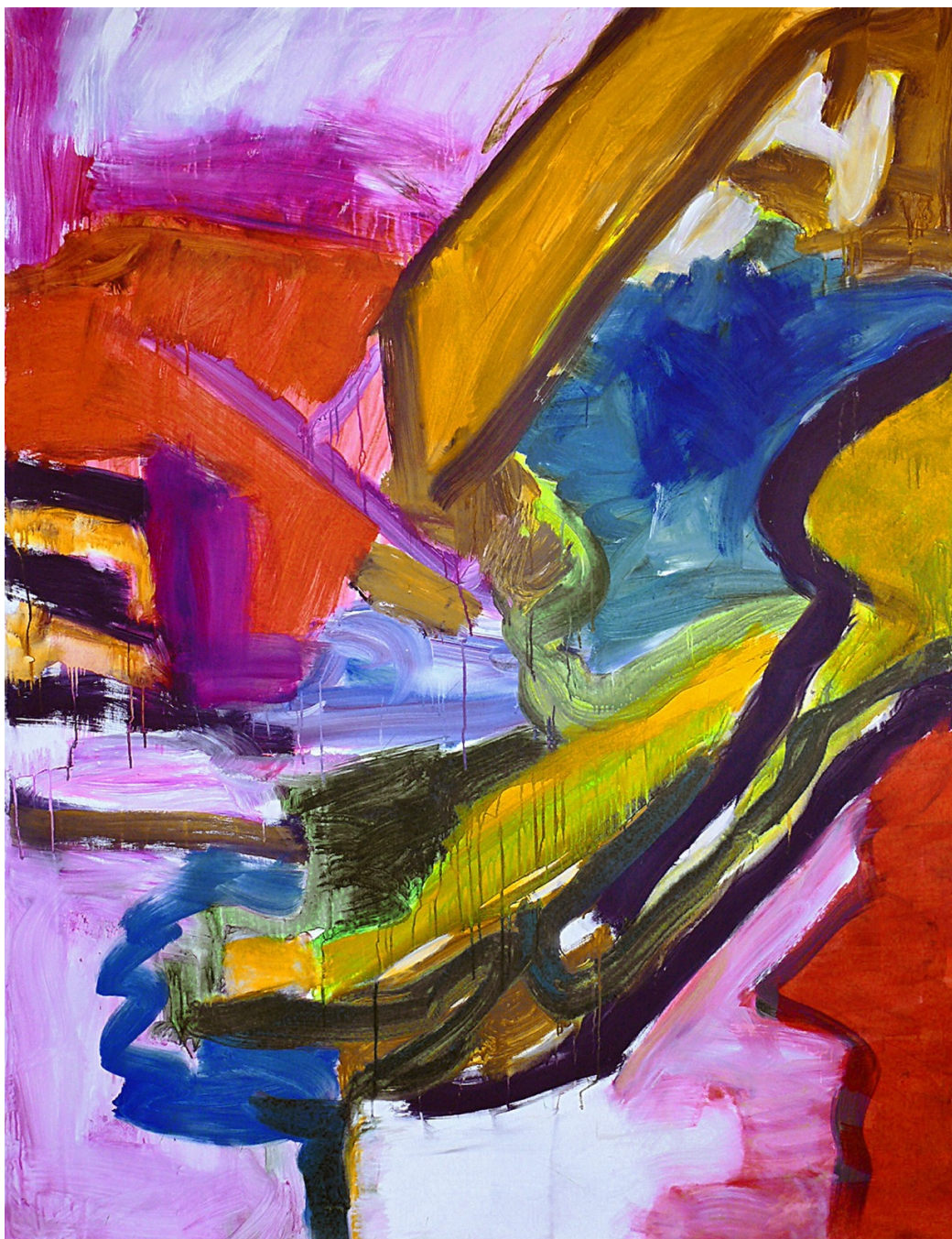
Oil on panel

30 x 24 in

2020



**The Door We Don't Open**  
Oil and encaustic on panel  
30 x 24 in  
2019



**Familiar Strange**

Oil on linen

30 x 24 in

2019



**First Room**

Encaustic on panel

30 x 24 in

2018

## **Sloane Whitfield**

3214 N Figueroa St 90065 Los Angeles  
United States

[sloane@sloanewhitfield.com](mailto:sloane@sloanewhitfield.com)

[sloanewhitfield.com](http://sloanewhitfield.com)

+1 323 555 0147